

09-Apr-26

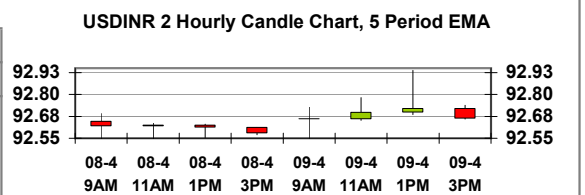
Spot date: April 13, 2026

Markets at a glance			USD/INR Forward Premia (Ps.)									
	Bid	Ask		Export	%	Import	%		Export	%	Import	%
USD/INR	92.6600	92.6700	Apr	13.50	3.13	15.50	3.59	Dec	222.00	3.34	224.00	3.37
Call (%)	4.75	4.85	May	45.50	3.90	47.50	4.07	Jan	243.00	3.29	245.00	3.32
O/N MIBOR	5.13	5.13	Jun	77.50	3.91	79.50	4.01	Feb	263.50	3.25	265.50	3.28
	Index	Change	Jul	107.50	3.89	109.50	3.96	Mar	287.50	3.22	289.50	3.24
BSE	76627.44	-935.46	Aug	133.50	3.76	135.50	3.81	Exact Month				
NSE	23773.35	-224	Sep	158.50	3.67	160.50	3.72	1 Month	27.60	3.57	29.60	39.29
Gold	4,729.06	10.42	Oct	181.50	3.57	183.50	3.61	3 Month	90.29	3.90	92.06	3.97
Silver	74.01	-0.0819	Nov	201.50	3.44	203.50	3.47	6 Month	168.47	3.64	170.47	3.68

LIBOR						
	USD	SOFR	SONIA	EURIBOR	TONA	HONIA
1 Month	4.9602	3.6583	3.7538	1.9350	0.7300	2.3232
3 Month	4.8537	3.6785	3.8390	2.1620	0.8613	2.4280
6 Month	4.6821	3.7040	3.9985	2.5250	0.9350	2.7000
12 Month	6.0414	3.7441	4.1931	2.8600	-	3.0486

Crosses against USD											
	Bid	Ask	Bid	Ask	Bid	Ask	Bid	Ask	Bid	Ask	
EUR	1.1678	1.1679	CAD	1.3853	1.3854	NOK	9.5188	9.5211	IDR	17,080	17,090
JPY	158.97	158.98	NZD	0.5834	0.5835	SEK	9.3072	9.3093	SGD	1.275	1.2752
GBP	1.3408	1.3409	BDT	122.7111	123.3802	THB	32.0800	32.1150	MYR	3.980	3.9875
CHF	0.7910	0.7911	AED	3.6729	3.6732	PHP	59.3800	59.4350	TWD	31.741	31.75
AUD	0.7033	0.7034	DKK	6.3986	6.3990	KRW	1478.80	1479.80	CNY	6.839	6.8411

Currency Futures						
	Apr		May		Jun	
	Bid	Ask	Bid	Ask	Bid	Ask
OTC	95.5325	95.5650	92.7925	92.8250	93.1125	93.1450
Future	93.3700	93.3800	93.8100	93.8300	93.9100	93.9300
Op Int \$m	1856379		188782		1196	



Indian Markets

Spot rupee ended at 92.66/67 to a dollar after opening the day at 92.66/67 level. Risk sentiment took a hit on renewed uncertainty about the Middle East ceasefire with crude prices rising 3.5% on the day. Equity markets benchmarks ended about 0.93% lower today.

DXY is trading slightly lower at 98.99 level ahead of today's PCE inflation data. Traders await the Q4 Final GDP data from the US. Markets expect that Core PCE inflation would have edged higher in March. Meanwhile, risk sentiment took a hit on growing uncertainty about the Middle East ceasefire.

Data out of Germany showed Ind. Output declined 0.3% m/m in February 2026, reversing an upwardly revised flat reading in the previous month and missing market forecast for a 0.9% rise. On an annual basis, production was flat, following a 0.9% contraction in January.

Important data releases scheduled today: US: Final GDP q/q; GDP Price index q/q; Weekly Unemployment claims; Personal Income m/m; Personal Spending m/m; Final Wholesale inventories m/m;

Please contact your Mecklai advisor to best understand how the information and analysis contained in this document should be used, given your specific exposures. If you do not have an existing advisor please write to info@mecklai.com to set up the relationship. The information and analysis contained in this document come from sources believed to be reliable and our own internal research; however, no representation or warranty, express or implied, is made as to the fairness, accuracy, completeness or correctness of this information. Nothing contained in this publication shall constitute an offer to sell/purchase or an invitation/ solicitation to do so for any currency, security, commodity or equity. Mecklai Financial Services Ltd. accepts no liability whatsoever for any loss, howsoever arising, from any use of this document, its contents or otherwise arising in connection therewith. No part of this document can be circulated or reproduced in any form without prior approval of Mecklai Financial Services Limited